



**FARR**<sup>®</sup>  
*Pilot House Yachts*

Farr | 50 56 60 63 73



## The 56

The Farr 56 is a truly stylish yacht. Her combination of breath-taking lines, distinctive Farr hull shape, 80ft (24.5m) tall three spreader rig and trademark pilot house with centre-cockpit set her apart. On closer inspection, you soon discover that there is so much more to this yacht than her striking looks. Bruce Farr, the world's leading yacht designer, has created *a superb performance cruiser*, with an interior that delivers unrivalled standards of comfort. In keeping with the others in the Farr Pilot House range, she provides outstanding accommodation, exhilarating performance



and simple, reliable handling.

Built from start to finish, to the most exacting standards in our own Swedish yard, she is the

ideal modern yacht: equally at

home eating the miles in the tradewinds as cruising around the bay while you entertain family and friends in luxurious style.



## A True Sailor's Yacht

The Farr 56 is responsive and light on the helm. The rod steering is positive and direct. In addition, a fully integrated hydraulic sail control system ensures simple and safe handling by the person at the helm. Full control of the mainsail and genoa is carried out from the wheel, the genoa sheets, mainsheet and outhaul are led back to four hydraulic winches. Apart from sunbathing, the only reason to venture onto the vast teak foredeck at sea is to hoist the MPS. Under power, *the Farr 56 handles easily* thanks to her 140hp four-cylinder turbo charged diesel engine. A Lewmar retractable bowthruster ensures effortless manoeuvrability. The winged keel provides stability and good windward performance, whilst allowing only moderate draught. Cavemous deck storage and uncomplicated access to the engine and spacious aft cabin complete what is *an amazingly practical yacht.*







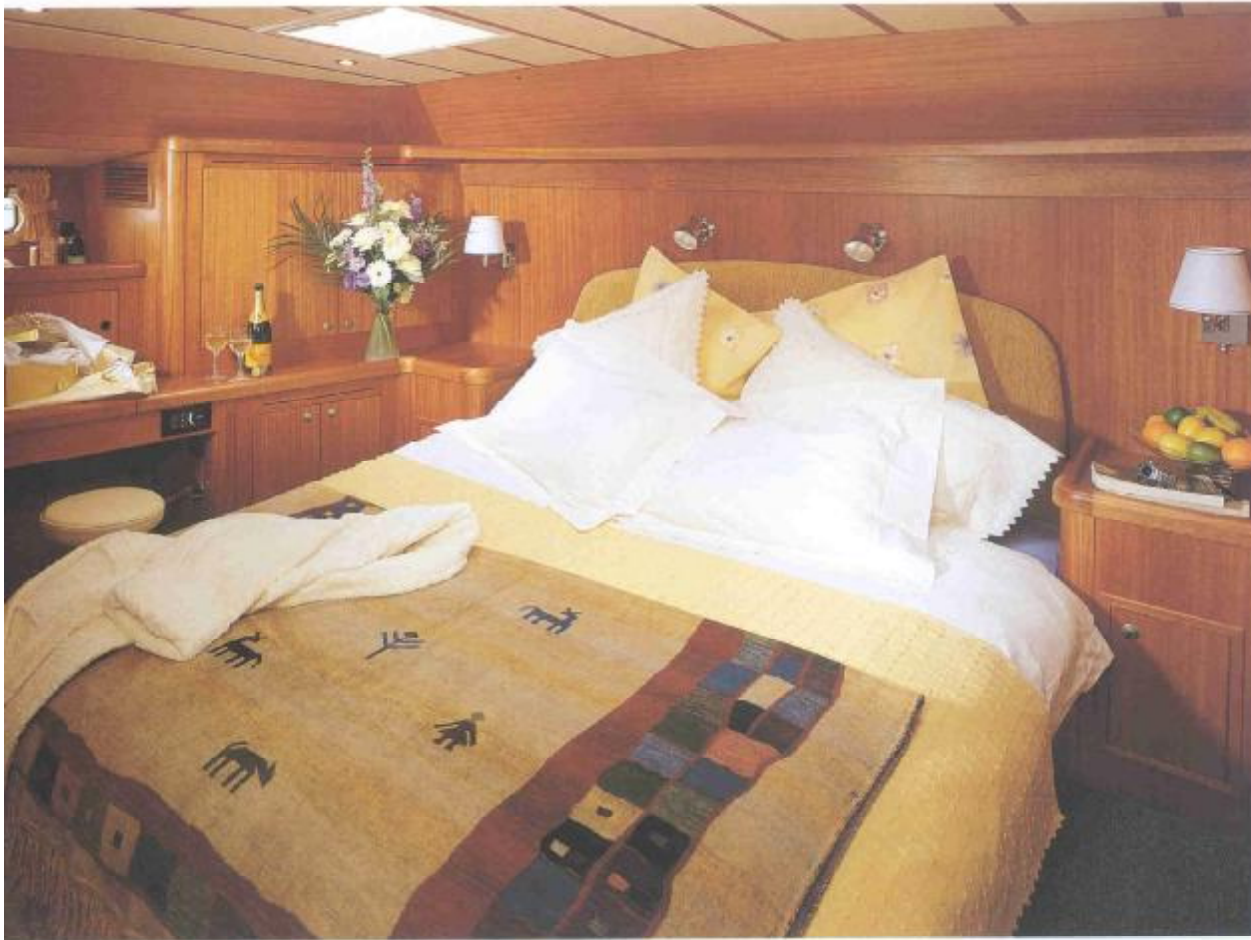


## The Pinnacle of Onboard Refinement

The Farr 56 is comfortable and luxurious. Her accommodation offers a stunning pilot house area with panoramic views. In the navigation area, engine and autopilot controls are fitted as standard and easy access is provided to the main engine. Down two steps is the separate galley. Its central location minimises motion at sea and *provides privacy for the chef*, while still allowing unimpeded access aft. Standard equipment includes a stainless steel gas stove with grill and oven, microwave, twin stainless steel sinks and a fridge and freezer. The substantial aft stateroom *features a king-sized centreline berth*, a vanity unit/writing desk, seating area and a multitude of hanging lockers and drawers. The ambience is completed by its own generous en-suite. A choice of either two or three spacious forward cabins can be incorporated, together with a second fully equipped en-suite.







## Total Attention to Detail

The inspiration behind the Farr Pilot House range is an unwavering belief that the ultimate owner's yacht must combine thrilling performance and easy handling with supreme luxury. The original design brief to Bruce Farr communicated this vision in simple language -

*"The yacht must be able to be sailed in all of the world's oceans without the need to have technical or sailing experts on board. In addition, she must come with a level of standard equipment that enables a couple to sail the yacht without crew and in complete comfort."*

Technically and aesthetically, the standards applied to every aspect of the yachts' completion are meticulous. From the hand-laid hull and deck, superstructure, sails and handling equipment, mast, rigging, deck hardware, engine and cockpit technology - all the way to the African Khaya mahogany veneers and stainless steel locker catches, hinges and door handles, *every conceivable need is considered.*

Whatever your final choices of interior layout and finish, you can be certain that only the very finest materials will be used throughout, and that all work will combine



traditional Swedish craftsmanship with the most modern manufacturing techniques. The result is the kind of genuine low-maintenance luxury that the modern yachtsman demands.

### Your Partner on the Water

Each Farr 56 is built to order. Layout and specification are *individually tailored to meet precise needs and tastes*. Each finished yacht is delivered afloat and in commission at our manufacturing facility at Lysekil in Sweden. Prior to hand over, we will complete the most thorough pre-delivery inspection. Your yacht is tested under power and sail during these trials. All sailing instrumentation is calibrated and all pumps, toilets, showers and general equipment are run and tested. As part of what is an ongoing partnership, we are committed to looking after you wherever you are in the world at any time.



**FARR**<sup>®</sup>  
*Pilot House Yachts*

**BSI Marine Sweden AB.**  
Valbodalen, S-453 22 Lysekil, Sweden  
Tel: +46 (0) 523 611830  
Fax: +46 (0) 523 10900  
e-mail: [info@bsimarine.se](mailto:info@bsimarine.se)  
[www.farr-pilothouseyachts.com](http://www.farr-pilothouseyachts.com)

**Boat Sales International Ltd.**  
Hamble Point Marina, School Lane, Hamble,  
Southampton, SO31 4NB, England  
Tel: +44 (0) 23 8045 7966  
Fax: +44 (0) 23 8045 7977  
e-mail: [enquiries@boatsales.co.uk](mailto:enquiries@boatsales.co.uk)  
[www.farr-pilothouseyachts.com](http://www.farr-pilothouseyachts.com)

**BSI Benelux B.V.**  
F.M.T.C. Ijsselmeerdijk 2, 8221 RC Lelystad,  
Nederlands.  
Tel: +31 (0) 320 279845  
Fax: +31 (0) 320 264525  
e-mail: [info@farr-pilothouseyachts.com](mailto:info@farr-pilothouseyachts.com)  
[www.farr-pilothouseyachts.com](http://www.farr-pilothouseyachts.com)