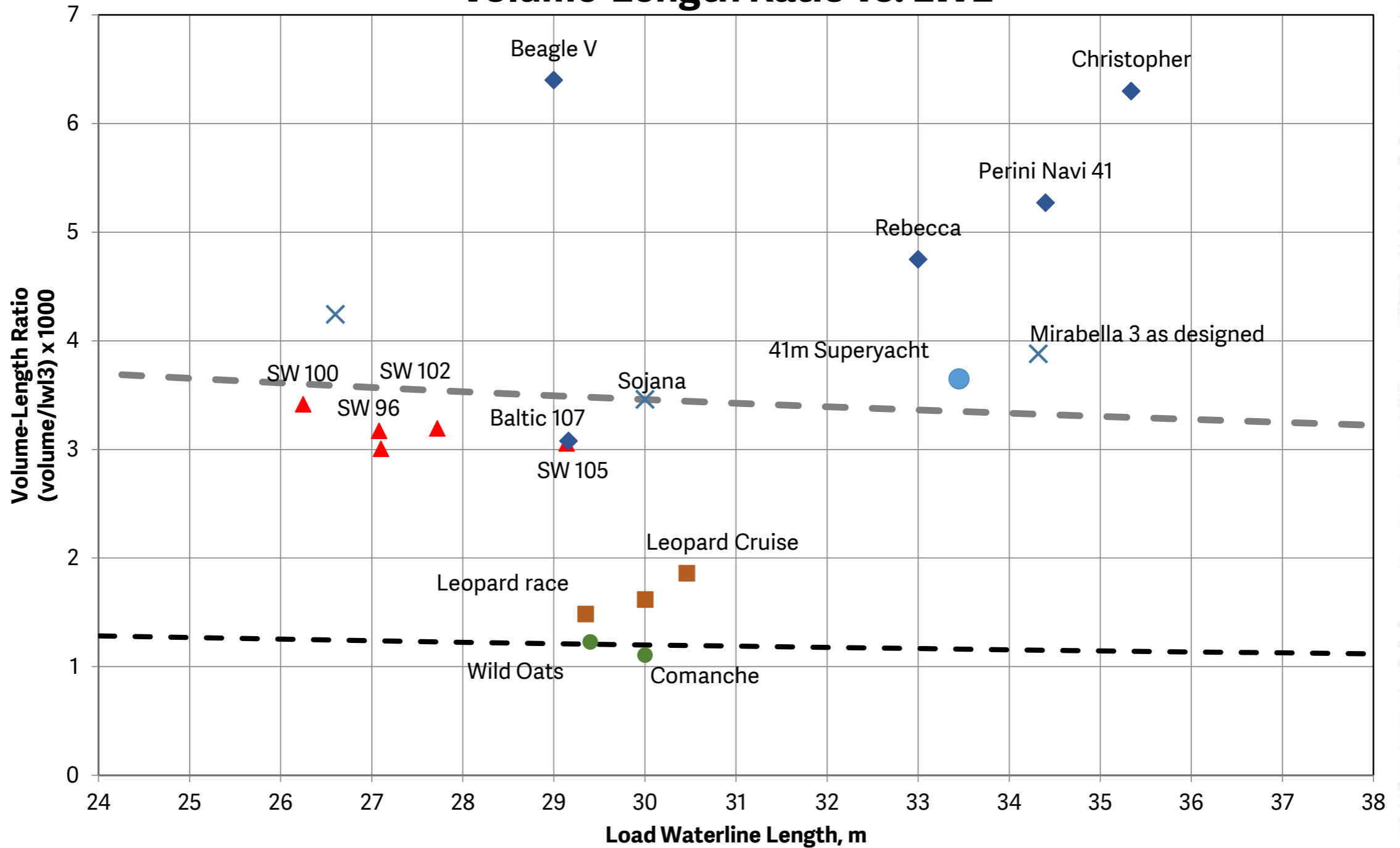
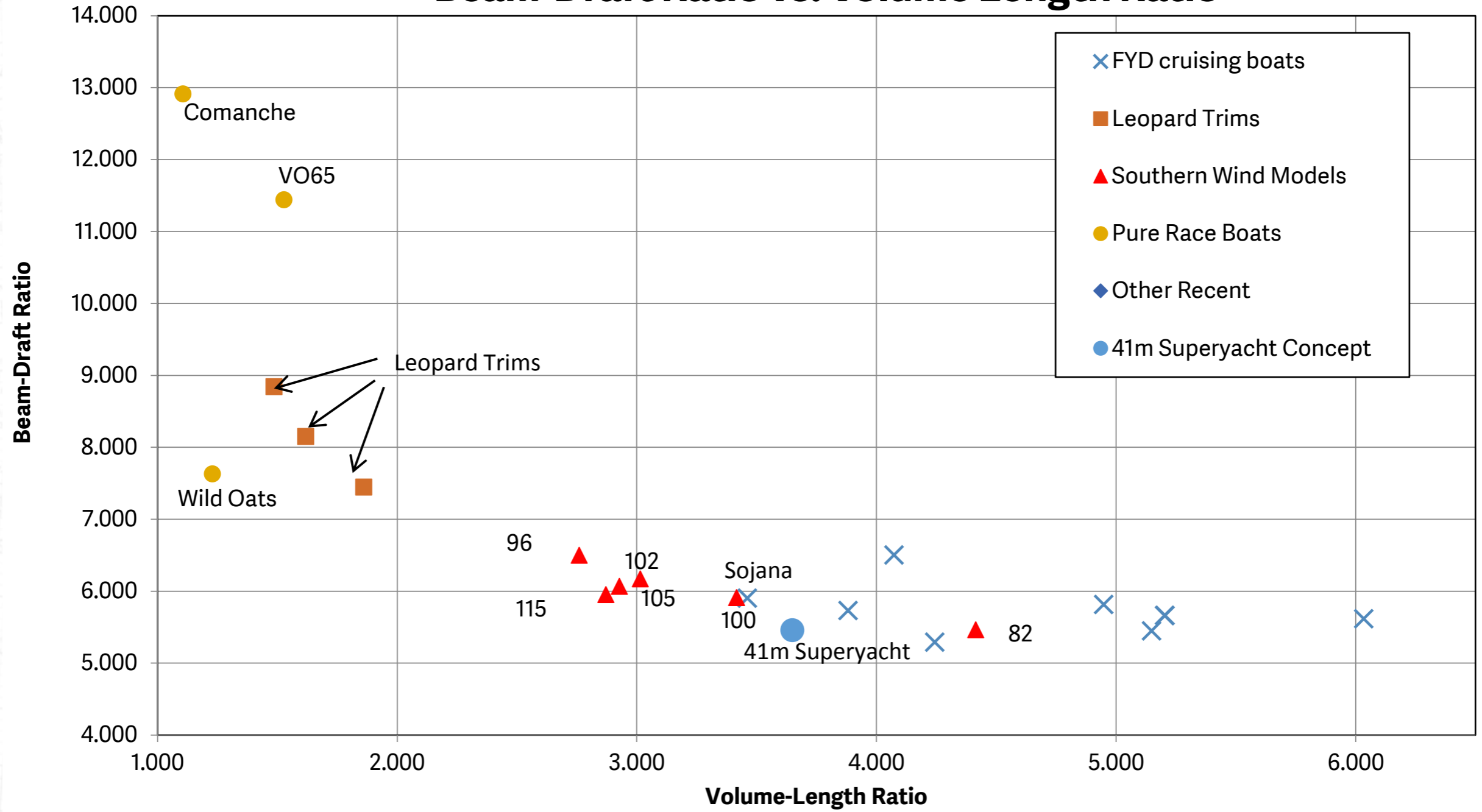


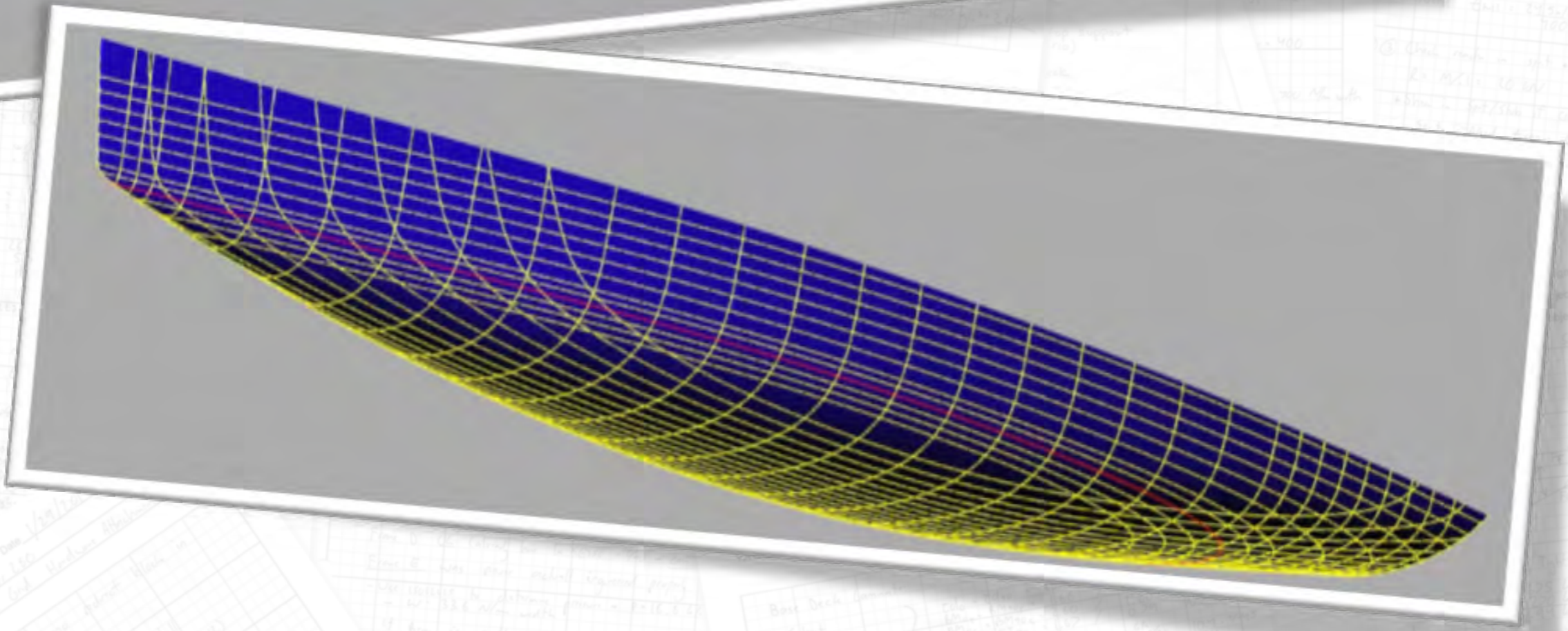
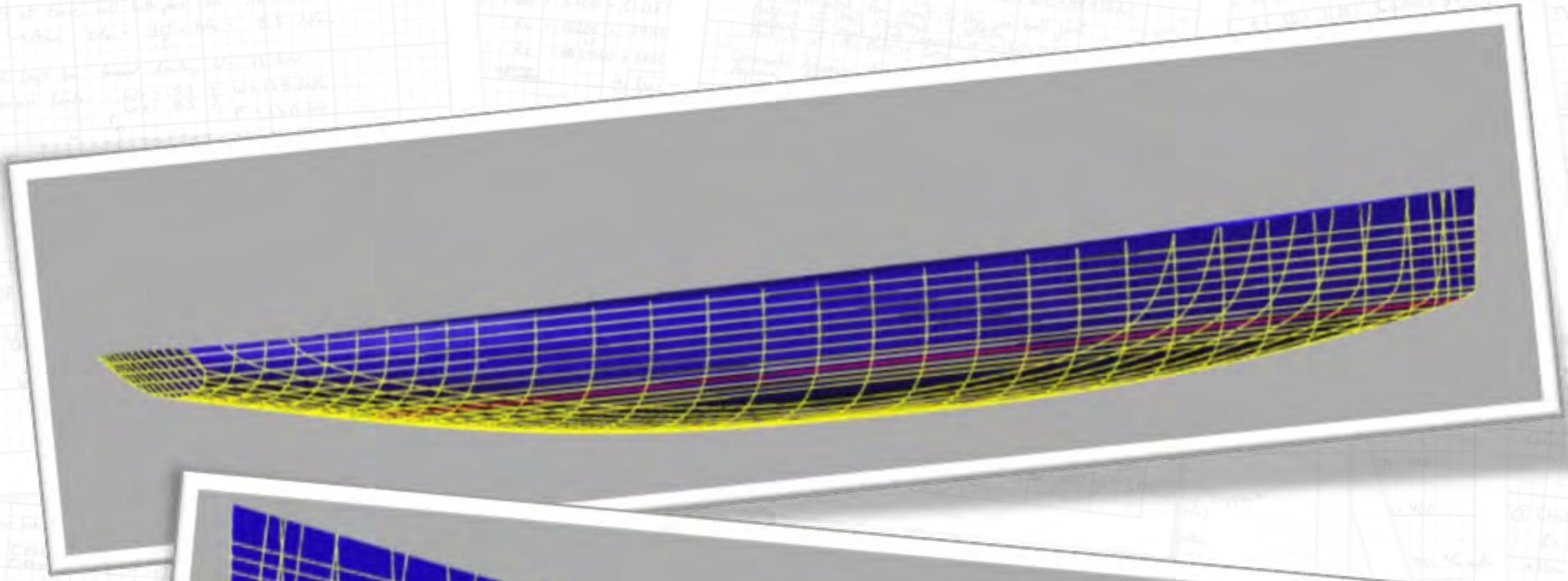
Volume-Length Ratio vs. LWL



- Pure Race Boat Line
- Typical Performance Large cruiser
- × FYD cruising boats
- Leopard Trims
- ▲ Southern Wind Models
- ◆ Other Recent
- Racing Designs
- Proposed 41m Superyacht

Beam-Draft Ratio vs. Volume Length Ratio

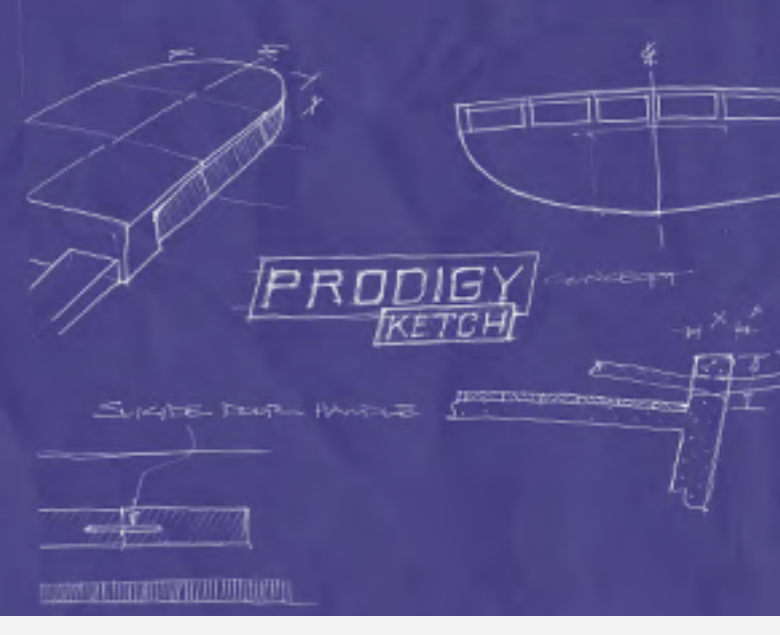
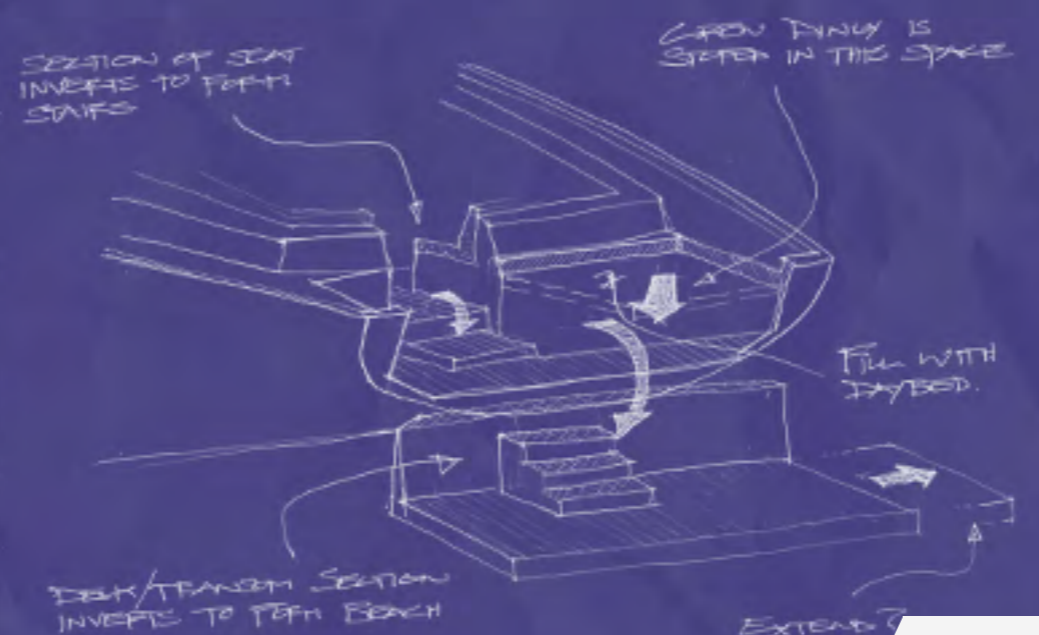
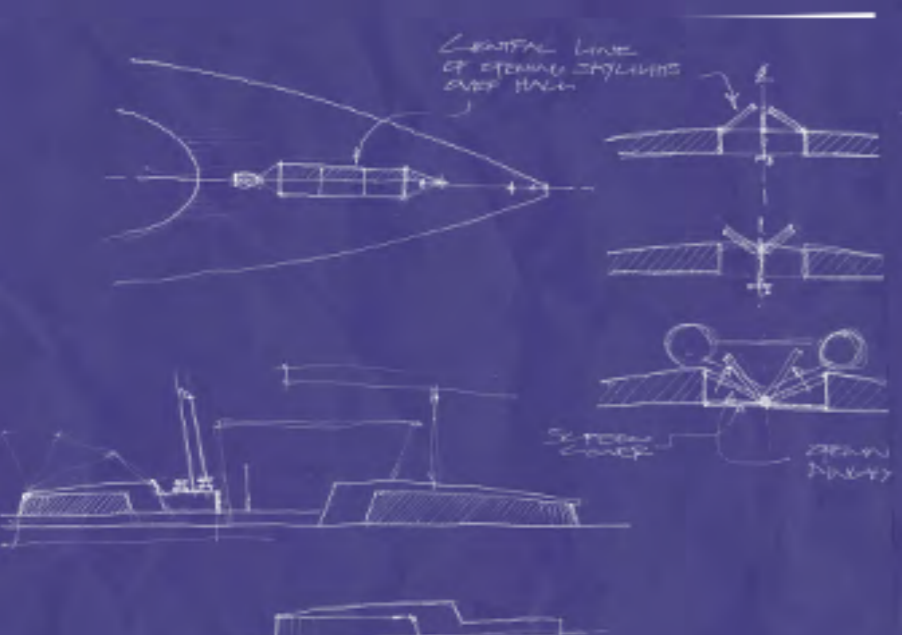
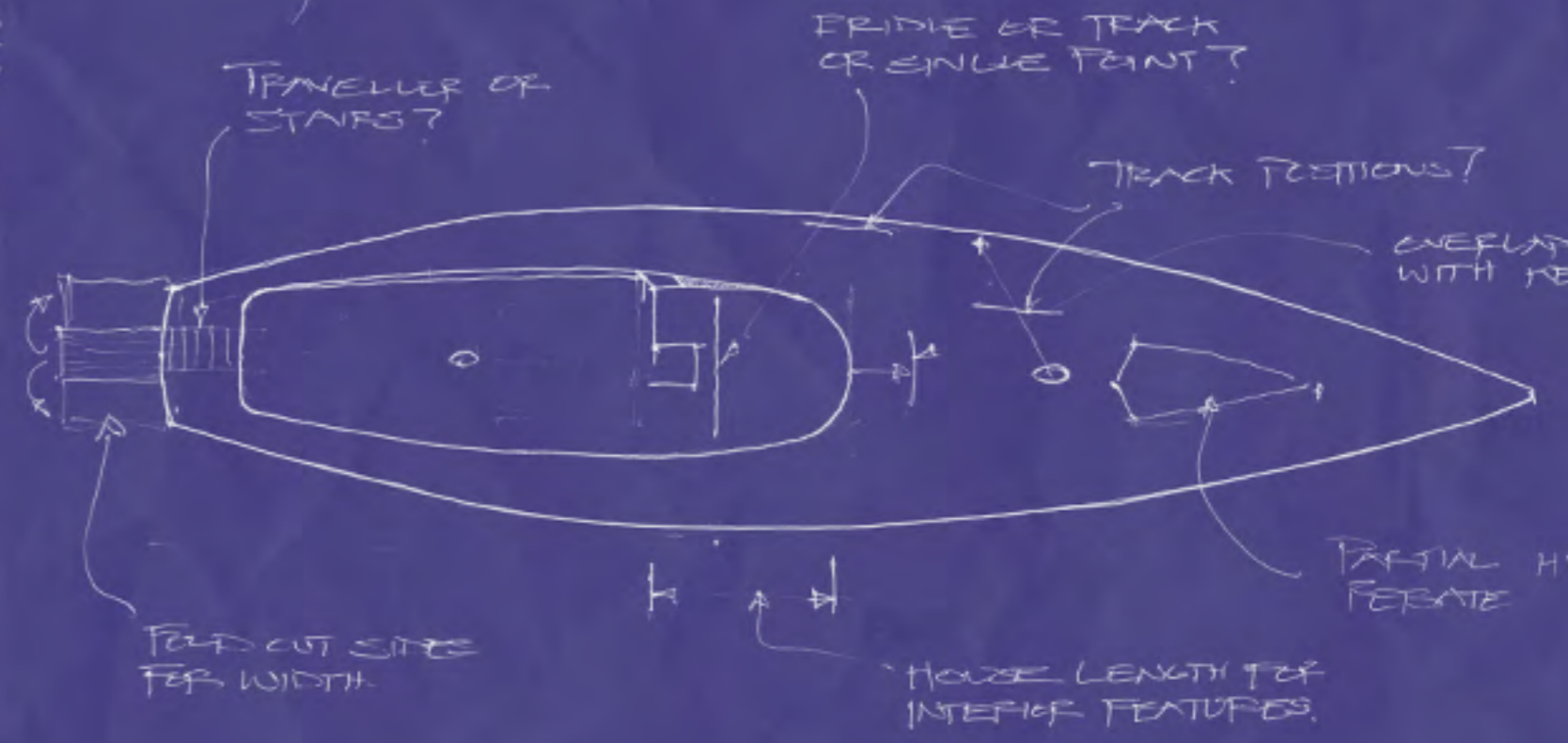
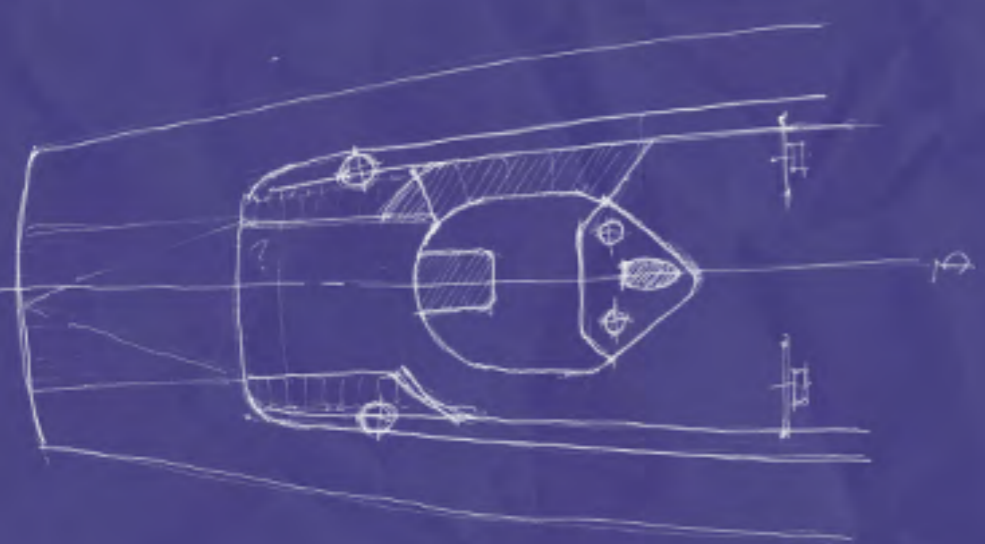
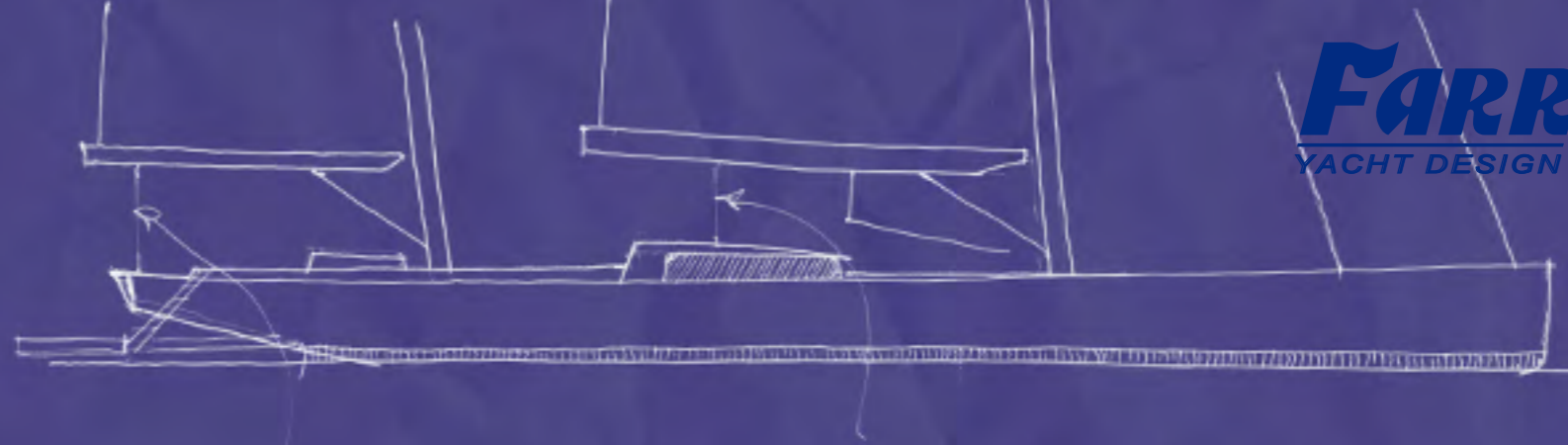


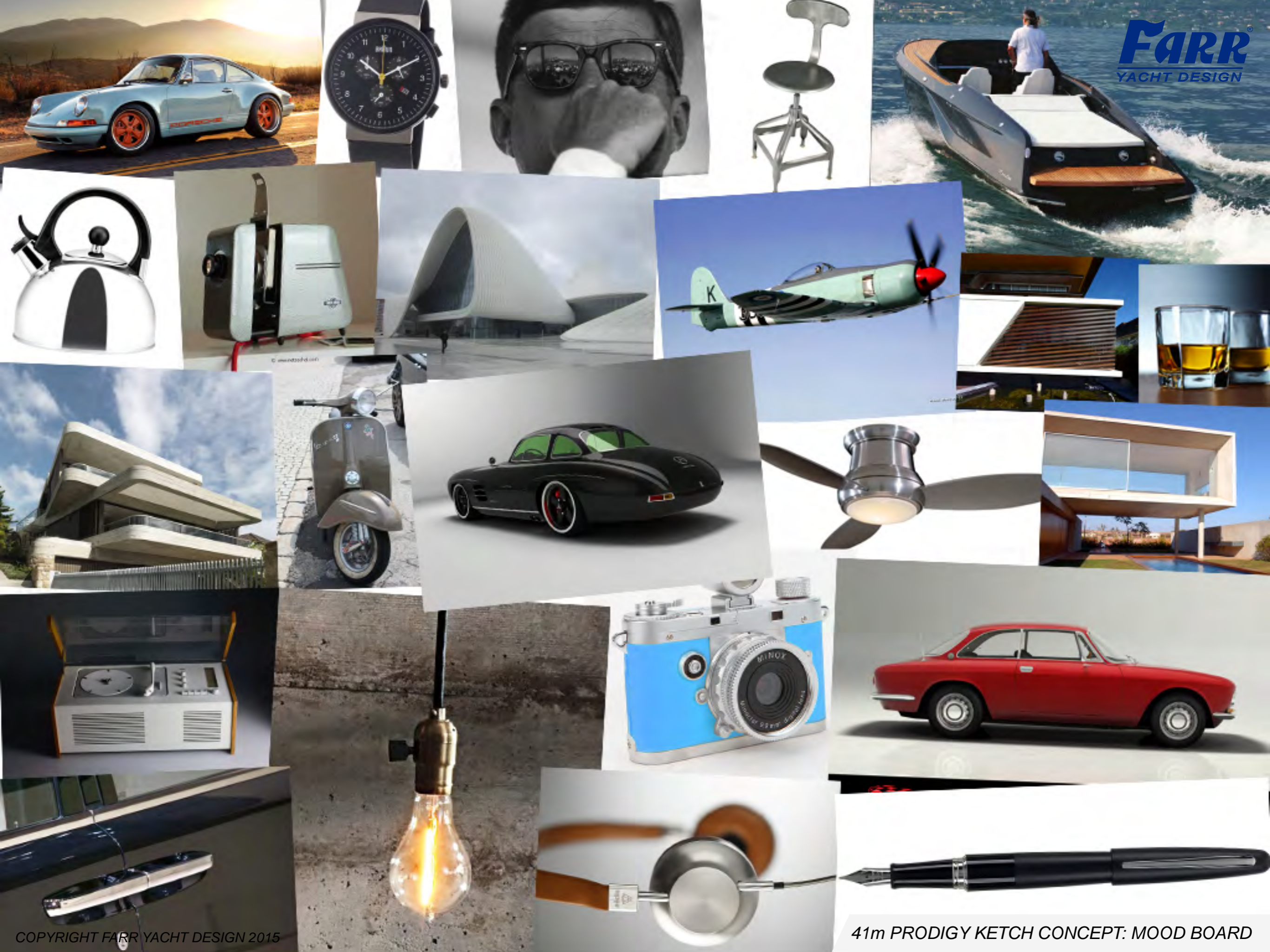


41m LOA Superyacht Concept

Boat Speed for Selected Wind Speed and Wind Angle

		True Wind Speed, knots											
		6	7	8	9	10	12	14	16	18	20	25	30
True Wind Angle, Degrees	Upwind	8.1	9.0	9.7	10.2	10.6	11.2	11.5	11.8	11.9	12.0	12.2	12.1
	50	8.7	9.7	10.5	11.2	11.7	12.3	12.7	13.0	13.1	13.3	13.4	13.4
	55	9.3	10.3	11.1	11.7	12.2	12.7	13.1	13.3	13.5	13.6	13.8	13.9
	60	9.9	10.9	11.6	12.1	12.5	13.0	13.4	13.6	13.8	13.9	14.2	14.3
	65	10.3	11.3	12.0	12.4	12.8	13.3	13.6	13.9	14.1	14.2	14.5	14.7
	70	10.7	11.6	12.2	12.7	13.0	13.5	13.9	14.1	14.3	14.5	14.8	15.0
	75	10.9	11.8	12.5	12.9	13.2	13.7	14.1	14.4	14.6	14.8	15.2	15.4
	80	11.1	12.0	12.6	13.0	13.4	13.8	14.3	14.6	14.8	15.0	15.5	15.8
	85	11.2	12.1	12.7	13.1	13.5	14.0	14.4	14.8	15.0	15.3	15.8	16.1
	90	11.2	12.1	12.7	13.2	13.5	14.1	14.5	14.9	15.2	15.5	16.1	16.6
	95	11.2	12.1	12.7	13.2	13.6	14.2	14.7	15.0	15.4	15.7	16.4	17.0
	100	11.1	12.0	12.7	13.1	13.5	14.2	14.8	15.2	15.5	15.9	16.7	17.4
	105	11.0	11.9	12.5	13.0	13.5	14.2	14.8	15.3	15.7	16.1	17.0	17.8
	110	10.7	11.7	12.5	13.1	13.4	14.2	14.8	15.3	15.8	16.2	17.2	18.3
	115	10.4	11.5	12.4	13.0	13.5	14.2	14.7	15.3	15.9	16.4	17.5	18.6
	120	10.2	11.4	12.3	12.9	13.4	14.2	14.8	15.3	15.8	16.4	17.8	19.0
	125	9.9	11.1	12.1	12.8	13.3	14.2	14.9	15.4	15.9	16.4	17.9	19.5
130	9.6	10.8	11.8	12.5	13.1	14.0	14.7	15.4	16.0	16.6	17.9	19.8	
135	9.2	10.4	11.4	12.2	12.8	13.7	14.5	15.2	15.9	16.6	18.2	19.9	
	Downwind	8.6	9.6	10.5	11.2	11.8	12.4	12.9	13.6	14.4	15.1	17.6	20.5





41m PRODIGY KETCH CONCEPT: MOOD BOARD



41m PRODIGY KETCH CONCEPT: EXTERIOR VIEW 1



8

Preliminary Specifications

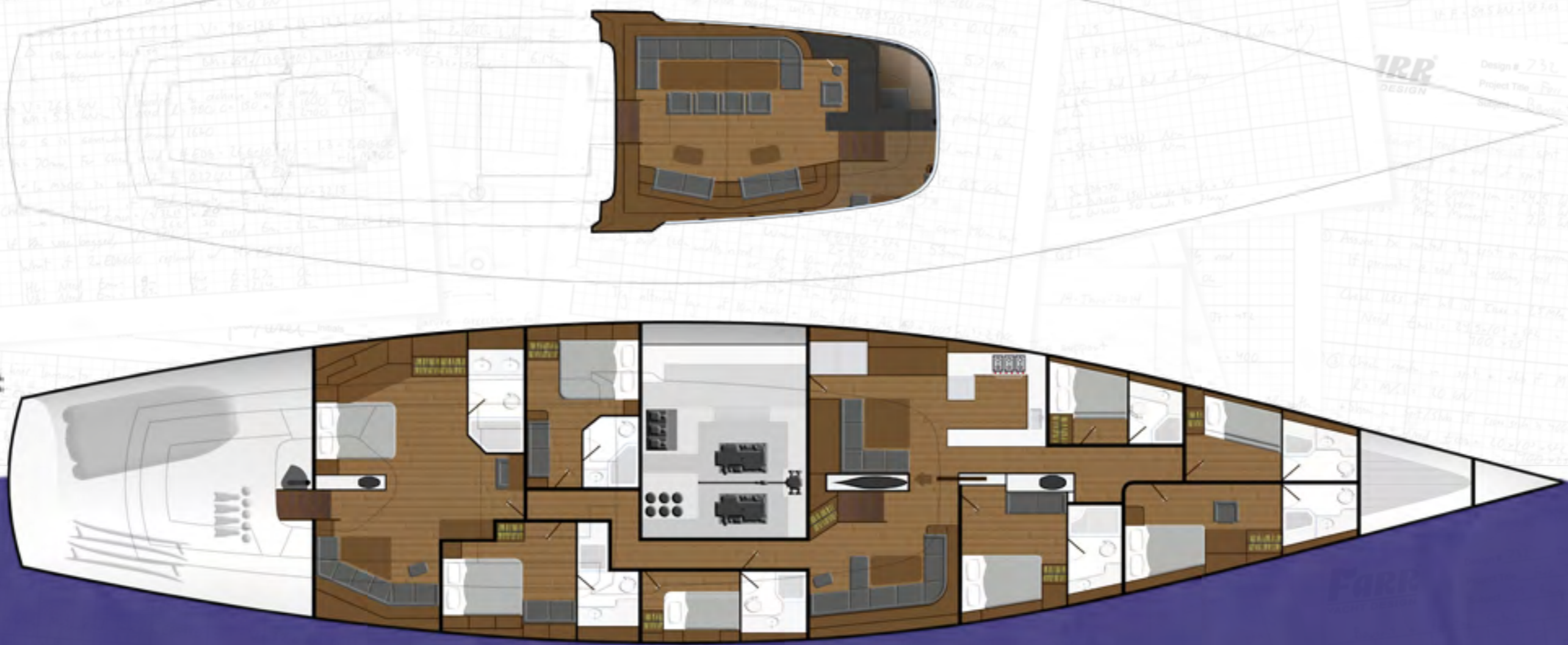
Length Overall:	41.0	m
Length Waterline:	33.4	m
Maximum Beam:	8.50	m
Displacement (Half Load):	150	Tons
Gross Tonnage:	186	Tons
Maximum Draft:	6.0	m
Minimum (Lifted) Draft:	3.5	m
DLR:	112	
Sail Area: (100% foretriangle, Main, Mizzen):	745	m²

MAIN MAST:

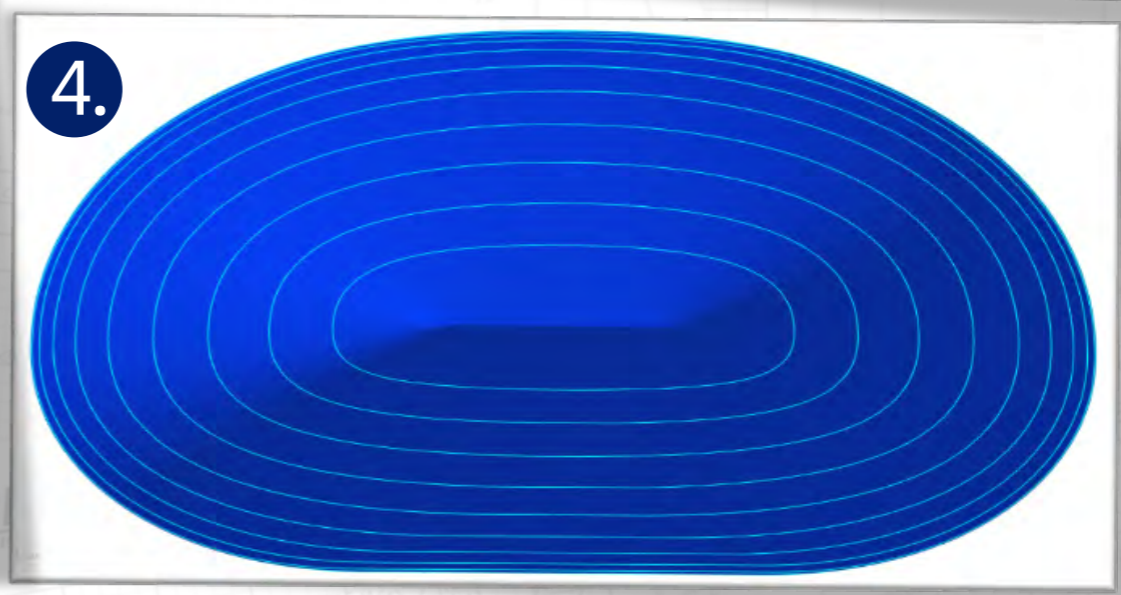
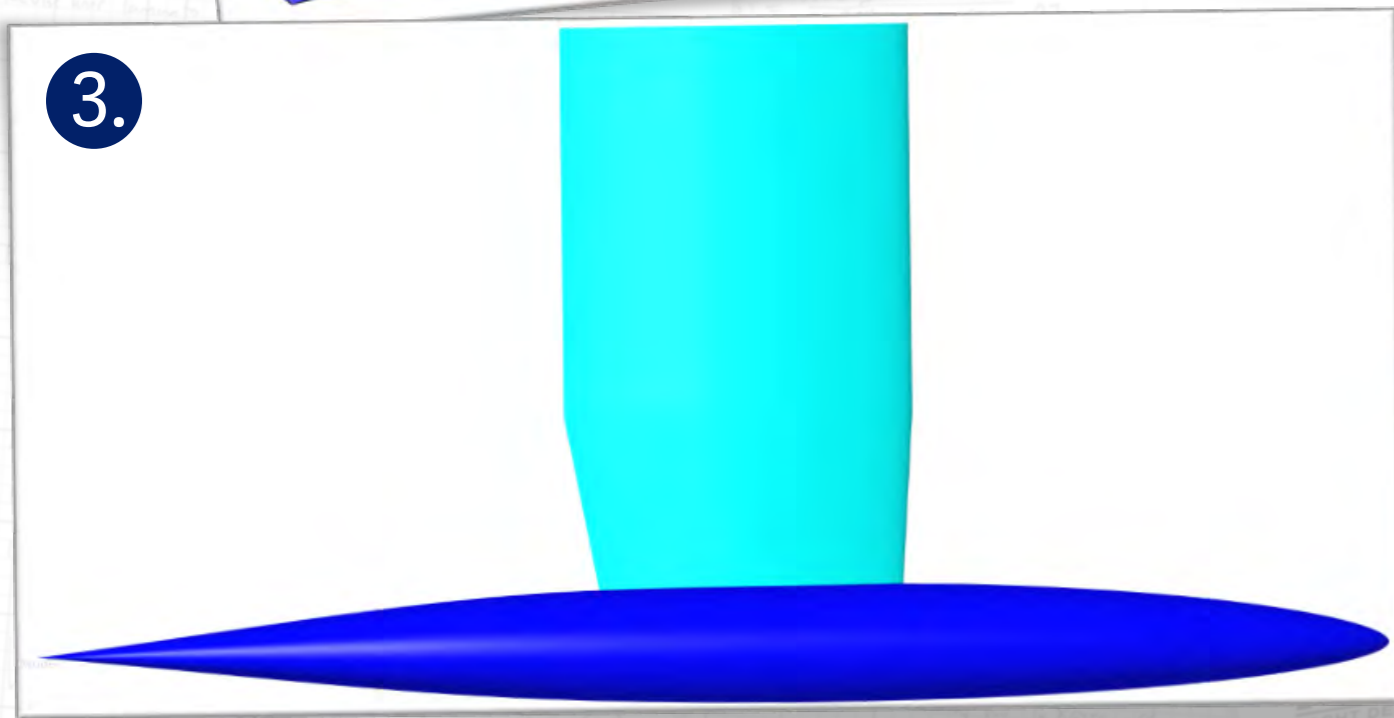
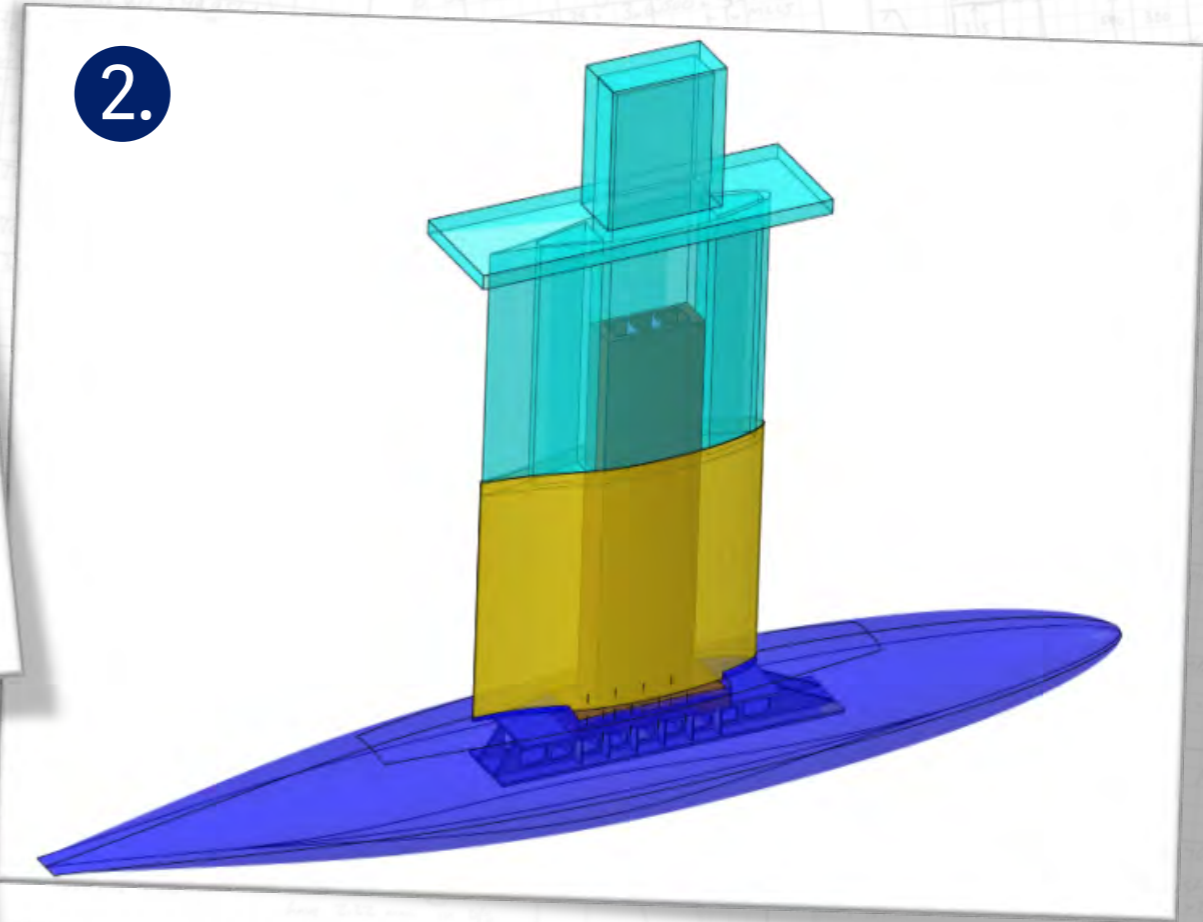
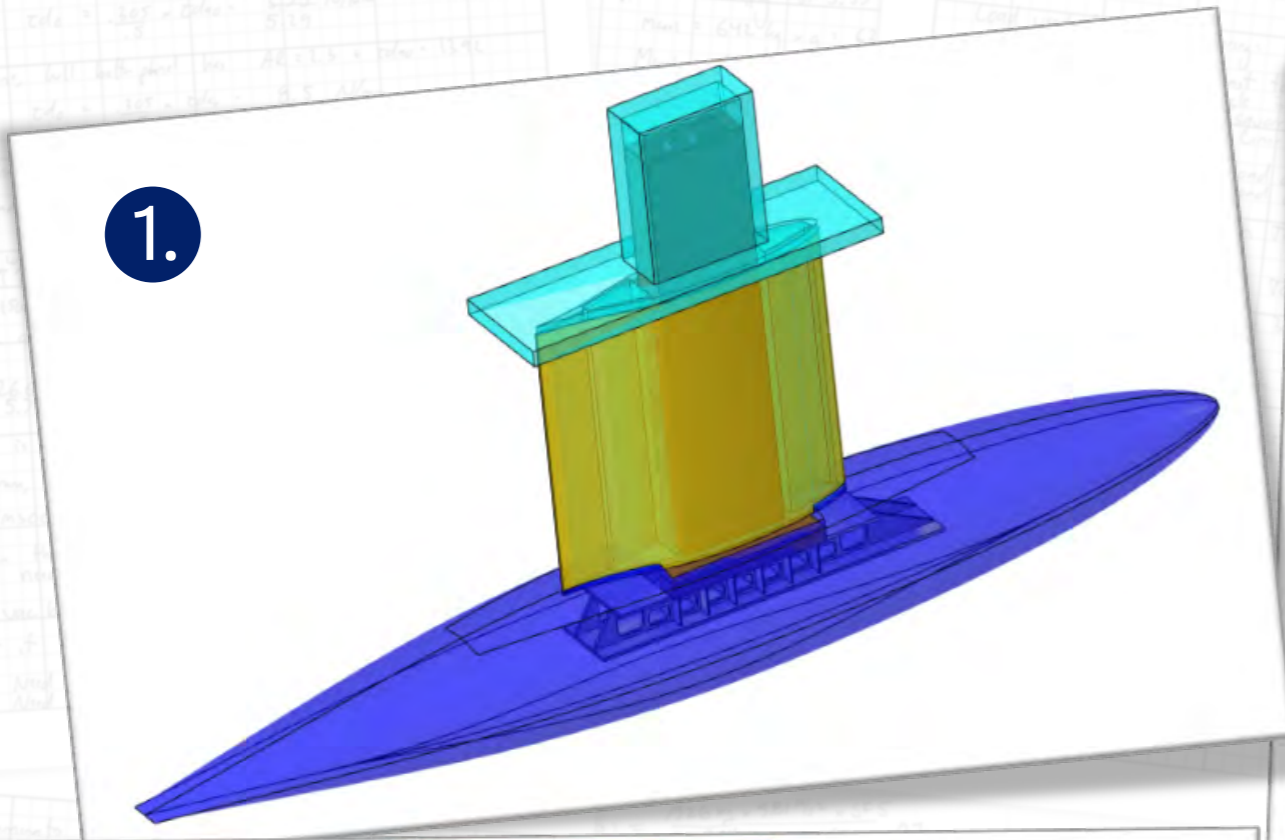
I:	43.0	m
J:	11.3	m
P:	43.9	m
E:	12.4	m

MIZZEN:

PY:	30.0	m
EY:	9.75	m

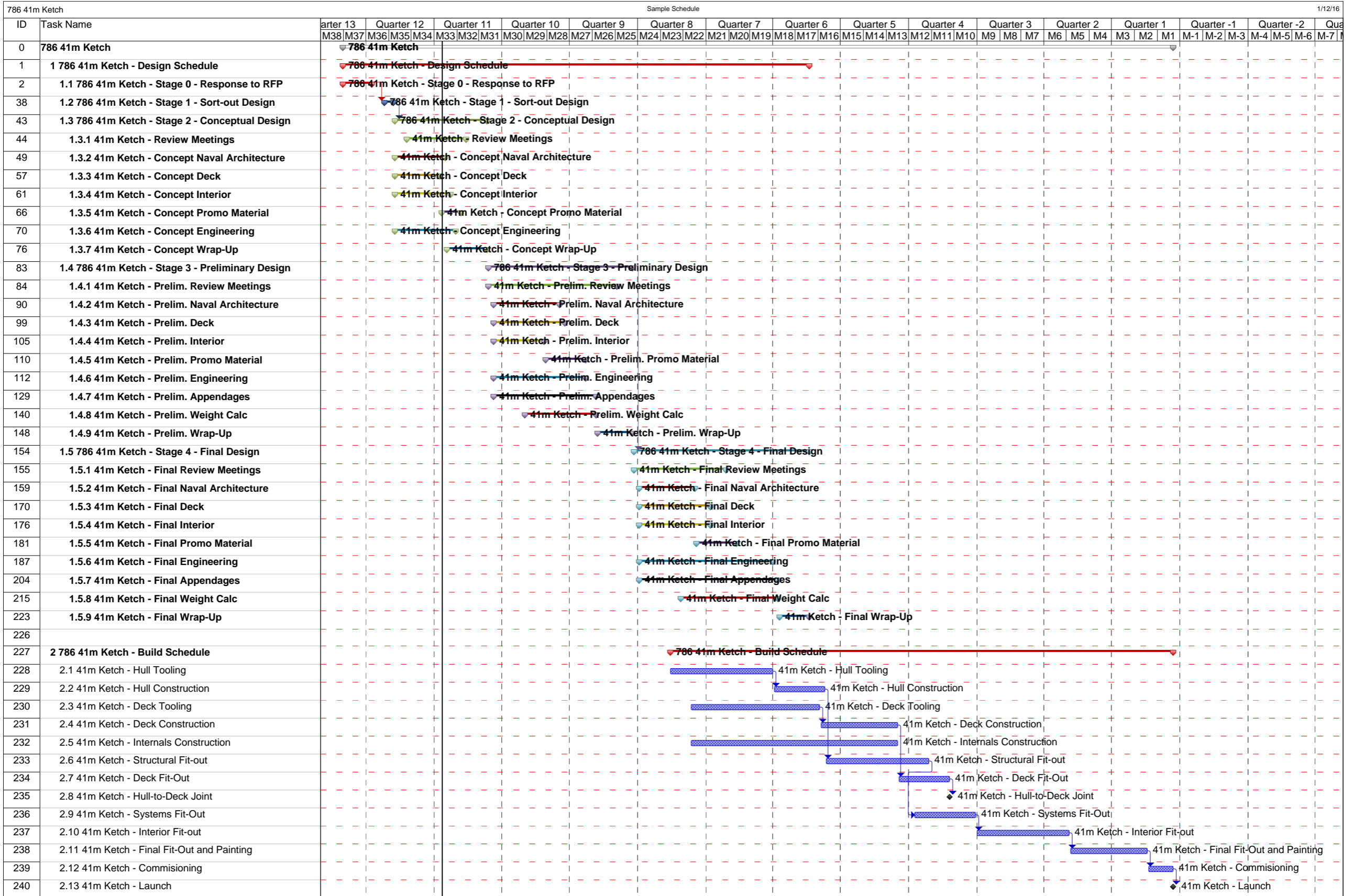


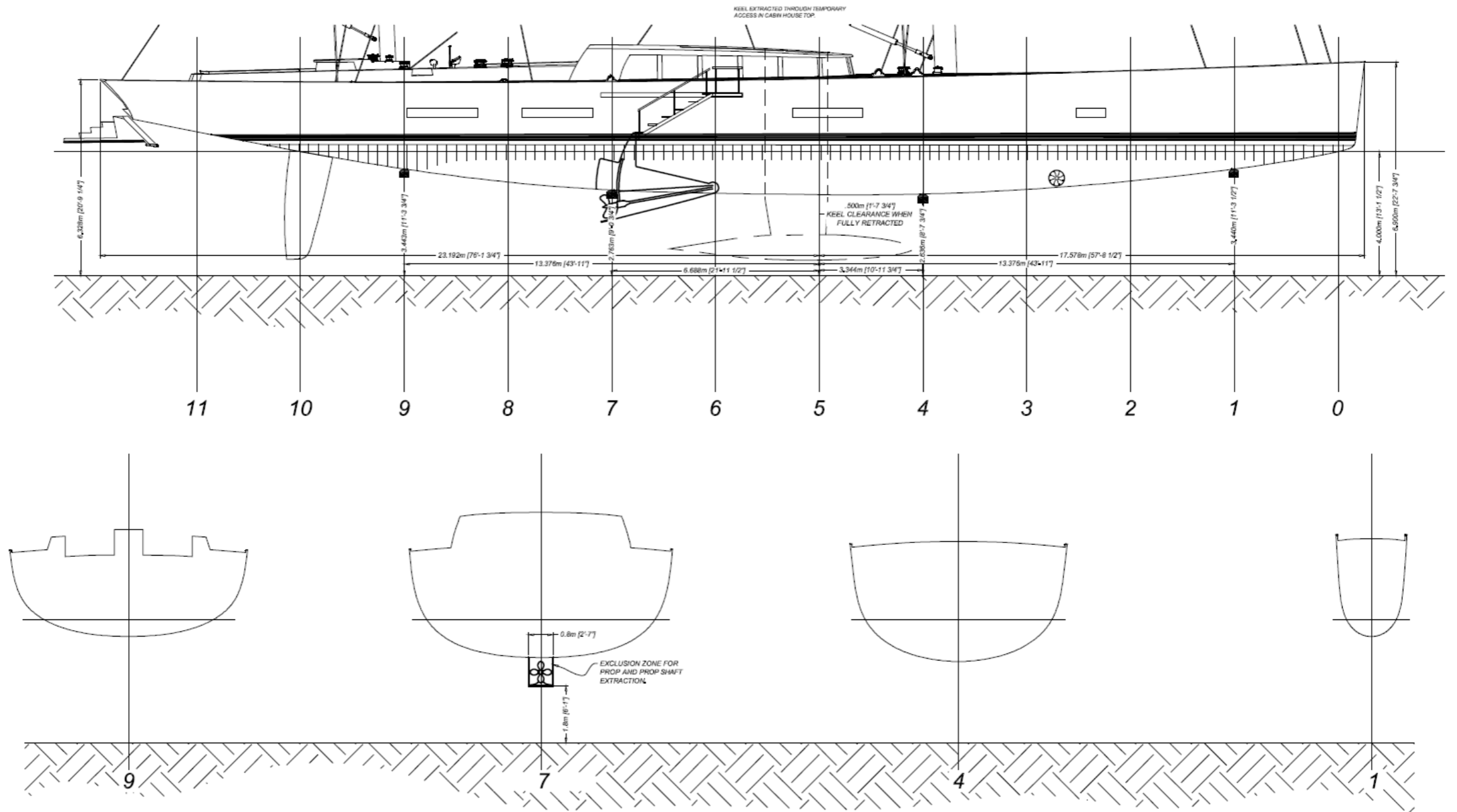
41m PRODIGY KETCH CONCEPT: INTERIOR VIEW




- 1. Concept telescoping keel in lowered position
- 2. Concept telescoping keel in raised position

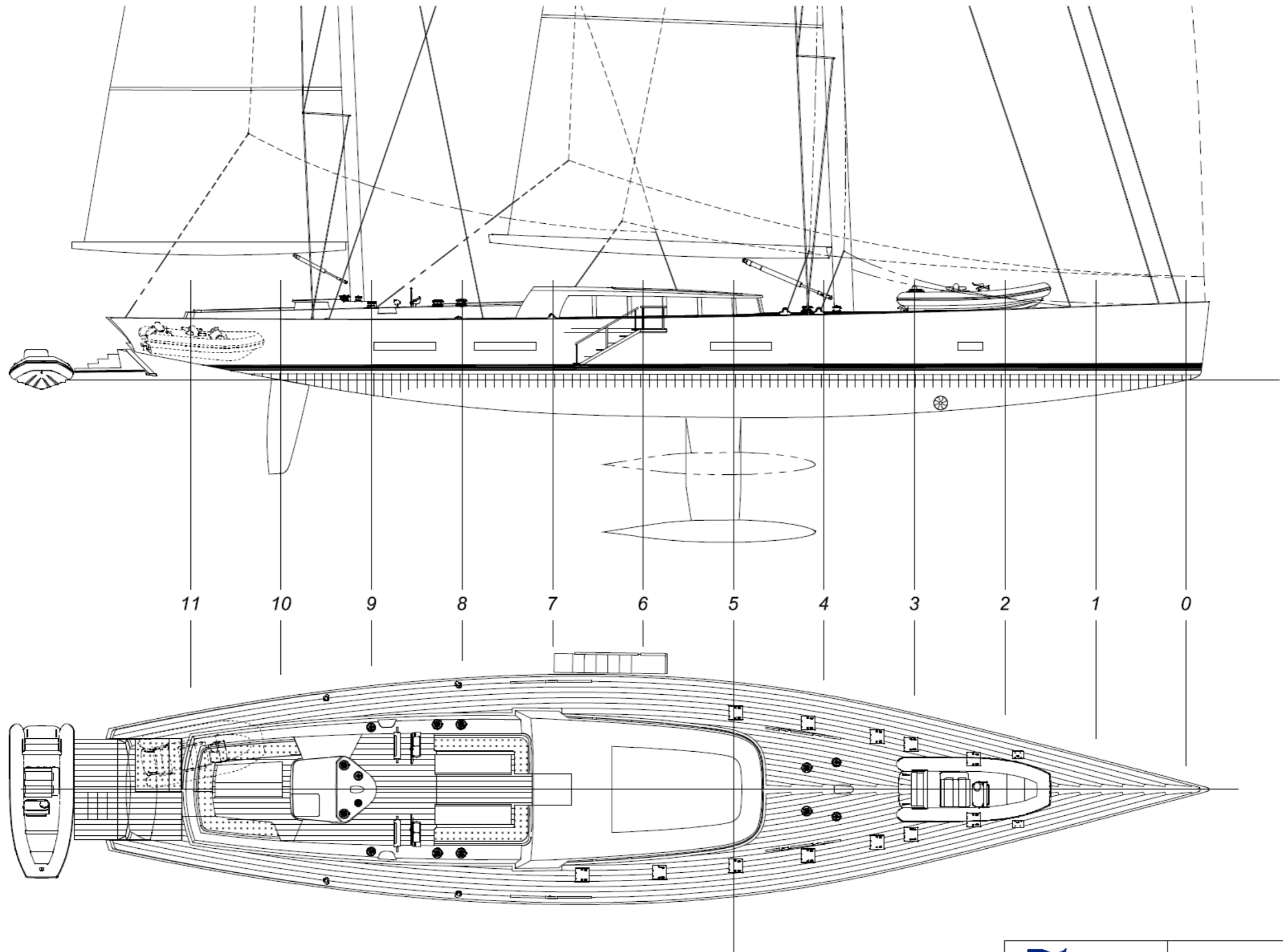
- 3. Profile view of lifting keel in lowered position
- 4. Bulb shape showing super-elliptical cross sections





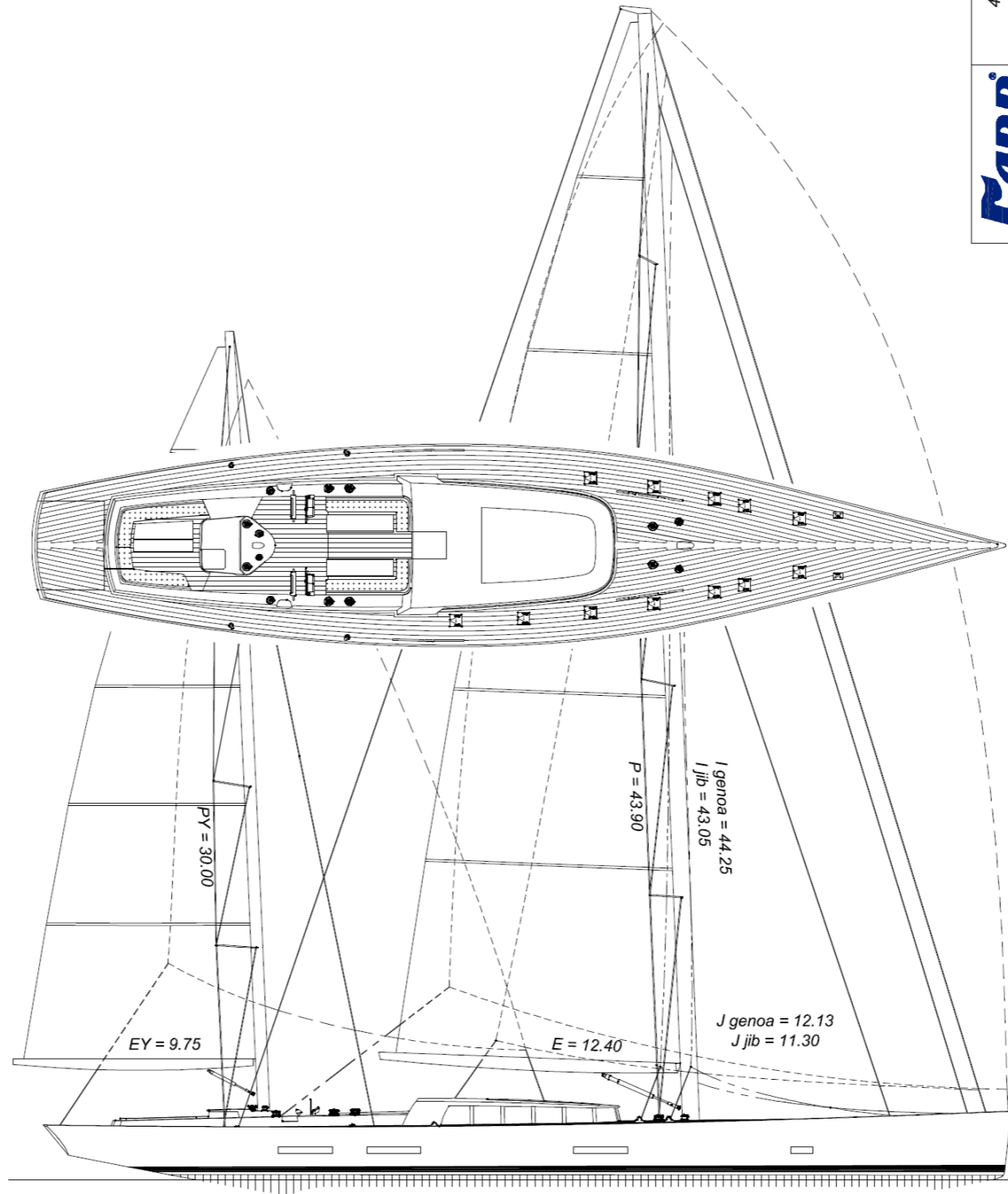
 <p>INFO@FARRDESIGN.COM</p>	41m KETCH	
	DOCKING PLAN	
	COPYRIGHT DATE: © FARR YACHT DESIGN LTD 2015	DESIGN #: 786
	SCALE: NOT TO SCALE	DRAWING #: 1201

COPYRIGHT



FARR YACHT DESIGN INFO@FARRDESIGN.COM	41m KETCH	
	DECK LAYOUT	
	COPYRIGHT DATE: 2015	DESIGN #: 786
	SCALE: NOT TO SCALE	DRAWING #: 0210

COPYRIGHT



- 11
- 10
- 9
- 8
- 7
- 6
- 5
- 4
- 3
- 2
- 1
- 0

FARR
YACHT DESIGN
INFO@FARRDESIGN.COM

41m KETCH

PROMO SAILPLAN

COPYRIGHT DATE: 2015 DESIGN #: 766
© FARR YACHT DESIGN LTD. SCALE: 1:250 DRAWING #: 0501